

Blore Edwards Spring Loaded Terminals

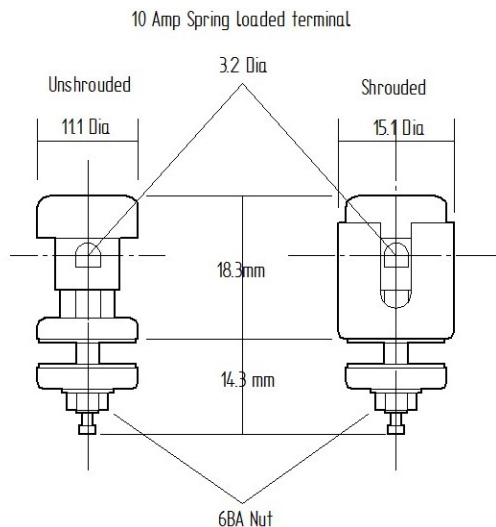
WE'RE IN CONTROL

General characteristics of Spring Loaded Terminals

Our sprung loaded terminals are made from high quality brass and are available in two basic sizes, and can be manufactured in shrouded or unshrouded forms. Our 10 and 15 Amp models are available with or without a central socket for a banana plug, and each type in this range can be manufactured with either a maroon or black cap. ***Other colours are available on request**

Additionally, the small unshrouded terminal is available in a panel sealed version. All terminals are basically similar, have a 3.17mm aperture in which the wire is clamped by the outer spring-loaded sleeve. A conductor with a large overall diameter can thus be accommodated and contact loads and areas are such that strands down to 38 swg have been safely employed. The smaller terminals are conservatively rated at 10 Amps, 250V ac, dc (rms), the large at 15 Amps, 500V ac, dc (rms). Our terminals are widely used for military radios.

10 Amp Dimensions in millimetres



SPECIFICATION: 10 AMP SLT

Rating: 10A, 250V ac, dc (rms)

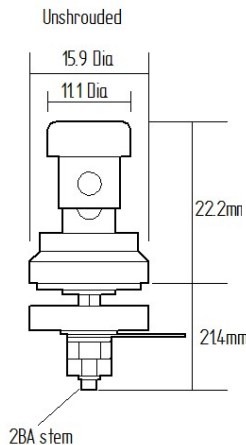
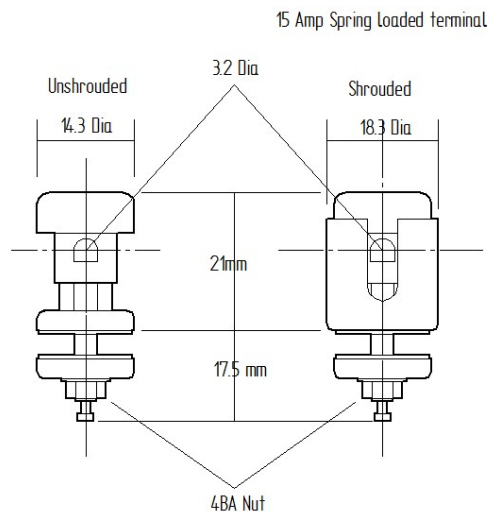
Circuit Resistance: 1 Milliohms (measured using 12 swg wire)

Main Body: Brass

Finish: Nickel Plated (zinc & black passivate available)

Max Wire Size: 14 swg

15 Amp Dimensions in millimetres



SPECIFICATION: 15 AMP SLT

Rating: 15A, 250V ac, dc (rms)

Circuit Resistance: 1 Milliohms (measured using 12 swg wire)

Main Body: Brass

Finish: Nickel Plated (zinc & black passivate available)

Max Wire Size: 14 swg

5 Amp Subminiature

A subminiature spring-loaded terminal is also available for use where space is limited. A primary design feature of the terminal is the maximum height of 12.7mm above panel level and a maximum wire size of 0.9mm diameter (20swg). Other features include a rating at 5A, 250V and a circuit resistance average of 1.5 milliohms. More details of this neat little product are available on request.

Like many of our products, the SLT is linked with Nato Stock Numbers and can be identified with the following code beginning 5940-99

In addition to help with ordering, our SLT's are easily identifiable by part number as detailed in the information below.

DESCRIPTION	PART NUMBERS				
	Older/obsolete numbers are show in brackets Product was formally a Painton/Plessy part				
	15 Amps 4BA thread		10 Amps 6BA thread		
	MAROON	BLACK	MAROON	BLACK	WITH SOCKET
SHROUDED	23-10-0007-00	23-10-0005-00			
	(313189)	(312104)			
UNSHROUDED	23-10-0008-00	23-10-0006-00			
	(313188)	(312105)			
SHROUDED	23-10-0003-00	23-10-0001-00	23-10-0013-00	23-10-0011-00	WITHOUT SOCKET
	(313187)	(312037)	(313185)	(312038)	
UNSHROUDED	23-10-0004-00	23-10-0002-00	23-10-0014-00	23-10-0012-00	
	(313186)	(311146)	(313184)	(311147)	
SEALED SPRING LOADED TERMINALS					
DESCRIPTION	23-10-0020-00		23-10-0019-00		
Small, black, unshrouded, 2BA	(501465)	Small, maroon, unshrouded, 2BA	(317857)		

Typical Applications

The Blore Edwards Spring Loaded Terminal range is mostly used in **Military** applications, for example **military radios** for field, and is used in other **Defence** areas. It is a high quality product that may have some commercial crossover in other areas such as for **spray booths** and other areas where a heavy duty sprung terminal is needed. With minimal modification we could also offer our terminals as speaker binding posts.